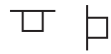


02 Floodlights ATUR3

Quickinfo

LUMINAIRE

ceiling, wall, mast
surface mounted
aluminium, grey RAL9006
IP66, IK08



LED

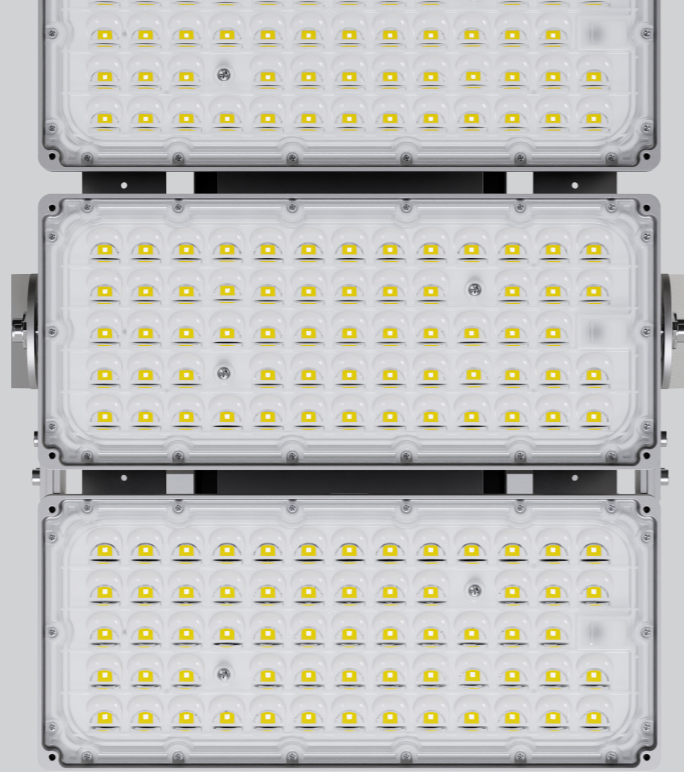
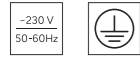
3000K, 4000K
CRI>80
initial MacAdam 4 SDCM
100.000h L80

LIGHT DISTRIBUTION



ELECTRIC

ON-OFF switchable, 0-10V dim
DALI dim



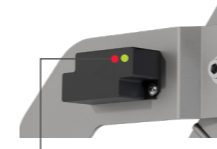
Description

The high-performance floodlight made of die-cast aluminum sets new standards for robust and efficient lighting solutions both indoors and outdoors. The ATUR3 combines a compact design with low weight while delivering impressive power. An asymmetrical light distribution provides targeted illumination of large areas, while the highly efficient LEDs offer high luminous efficacy with low energy consumption. Detachable and individually positionable ballasts ensure safety and long service life. The adjustable mounting bracket allows flexible installations, and the replaceable components make the floodlight a long-term, maintenance-friendly investment.



Types

PRODUCT CODE	POWER	LUMINOUS FLUX	COLOUR TEMP.	WEIGHT
FLA3200.XXX24	200W	33.200lm	3000K 4000K	4,0kg
FLA3400.XXX24	400W	66.600lm		7,2kg
FLA3600.XXX24	600W	99.600lm		11,7kg
FLA3800.XXX24	800W	132.800lm		14,2kg



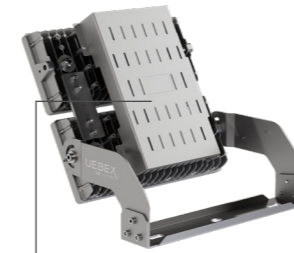
Integrated 10 kV surge protection with LED status display

.X|X|X --
1 2 3

1 Control
2... DALI dim
3... 0-10V dim

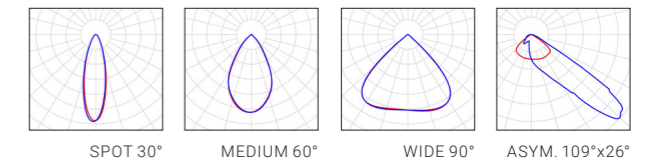
2 Light distribution
1... SPOT 30°
2... MEDIUM 60°
3... WIDE 90°
V... ASYMMETRIC 109°x26°

3 Colour temp.
3... 3000K
4... 4000K



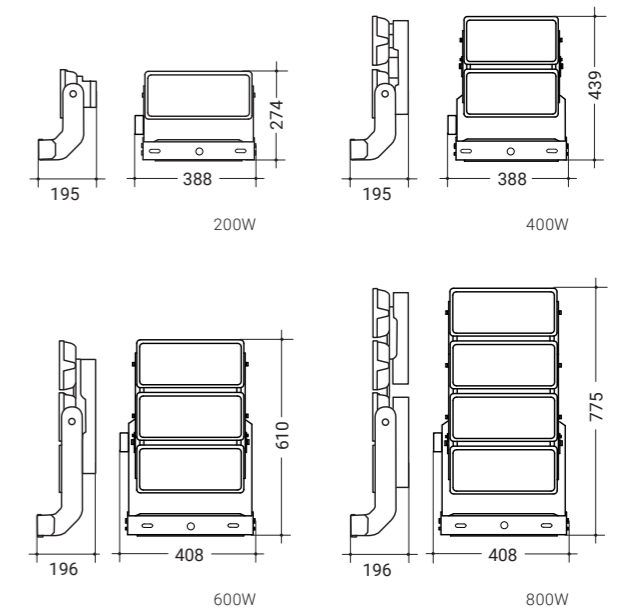
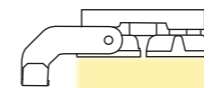
Power supplies mounted on the back, optionally removable for external placement

Light distribution



Dimensions

Asymmetric light distribution



Masts and accessories



Full range of steel and aluminium poles and accessories available – page 116.

