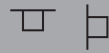


# 02 Floodlights SUPREA

## Quickinfo

### LUMINAIRE

ceiling, wall, mast  
surface mounted  
aluminium, stainless steel  
silver RAL9006  
IP66, IK10



### LED

1800K, 2000K, 2700K, 3000K, 4000K,  
5000K, 6000K  
CRI>70 (5000K, 6000K), CRI>80  
initial MacAdam 4 SDCM  
80.000h L80

### LIGHT DISTRIBUTION

symmetric 12° / 15° / 30° / 60° / 80°  
asymmetric 22°x95°

### ELECTRIC

ON-OFF switchable, 1-10V  
DMX  
KNX  
DALI dim  
Zigbee - SX Link



## Description

High-performance floodlights made of die-cast aluminium to the highest industry standards. Developed for use in maritime environments, heavy industry and sports applications. Extremely robust and resistant housing for the toughest environmental conditions and input voltage ranges up to 400VAC and 700VDC. Individually swivelling light units allow the light distribution to be extended. Highly efficient and durable light emitting diodes with uniform light distribution and high luminous flux packages. Integrated, replaceable ballast with temperature monitoring. Swivelling mounting bracket suitable for suspended and upright mounting.

HEAVY DUTY

## Types

PRODUCT CODE	POWER	LUMINOUS FLUX	LIGHT DISTRIBUTION	COLOUR TEMP.	WEIGHT
FLSU0350.XXX24	350W	56.000lm	SPOT 12° SPOT 15°	1800K 2000K	9kg
FLSU0700.XXX24	700W	112.000lm	SPOT 30° MEDIUM 60° MEDIUM 80°	2700K 3000K	19kg
FLSU1050.XXX24	1050W	168.000lm		4000K	25kg
FLSA0240.XVX24	240W	28.800lm	ASYMMETRIC 22°x95°	5000K 6000K	9,7kg
FLSA0450.XVX24	450W	54.000lm			13,3kg

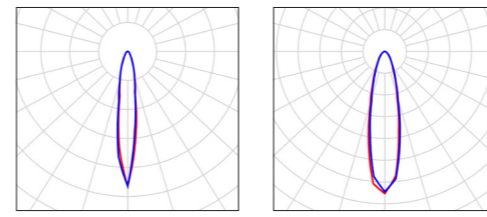
.XXX--  
1 2 3

**1 Control**  
2... DALI dim  
3... 1-10V dim  
4... KNX dim  
5... DMX dim  
Z... Zigbee SX-Link

**2 Light Distribution**  
0... SPOT 12°  
1... SPOT 15°  
2... SPOT 30°  
3... MEDIUM 60°  
4... MEDIUM 80°

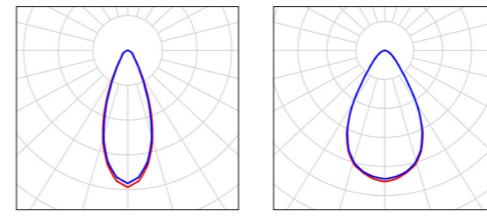
**3 Colour Temp.**  
1... 1800K  
2... 2000K/2700K on request  
3... 3000K  
4... 4000K  
5... 5000K  
6... 6000K

## Light distribution



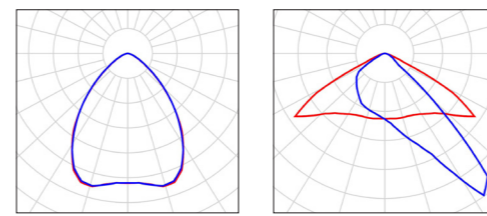
SPOT 12°

SPOT 15°



SPOT 30°

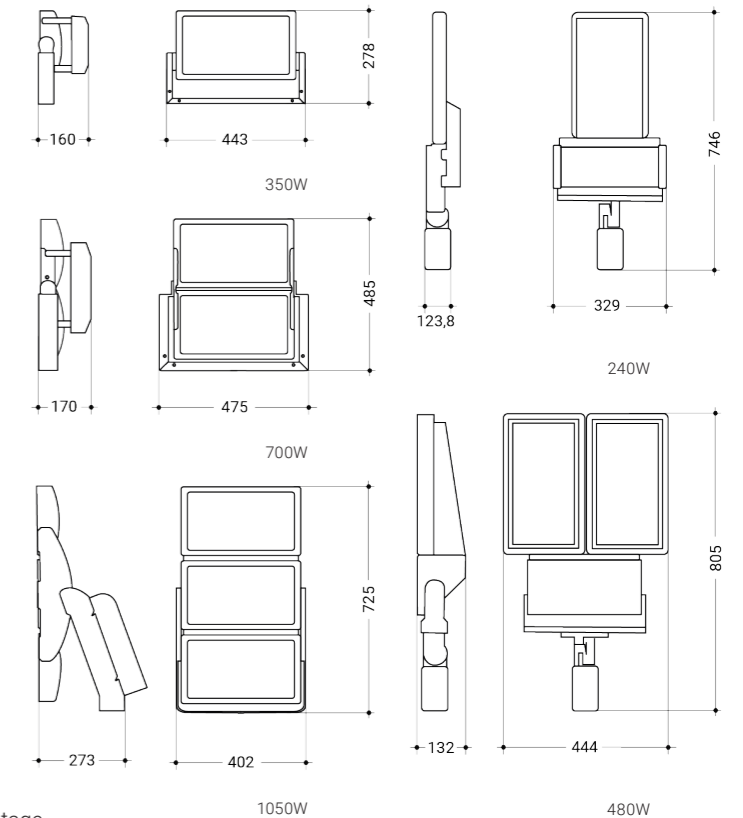
MEDIUM 60°



MEDIUM 80°

ASYM. 22°x95°

## Dimensions

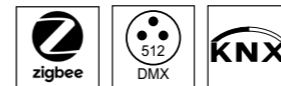


## Input voltage

528V AC  
747V DC

The SUPREA series is manufactured with an input voltage range of 90V to 305V AC and optionally 127V to 431V DC. The version for 400V input voltage covers 180V to 528V AC and optionally 254V to 747V DC.

## Numerous control options



## Customisable light distribution

The light module's light distribution can optionally be composed of different optics to fulfil individual illumination requirements.

## Mounting bracket

Customised mounting bracket available.

## Coating

The luminaire housing can optionally be coated according to specifications, e.g. for use in environments with chemical gases or high salt content.



SUPREA AS 240W

SUPREA AS 450W





# 02 Floodlights SUPREA

## Quickinfo

### LUMINAIRE

ceiling, wall, mast  
surface mounted  
aluminium, stainless steel  
silver RAL9006  
IP66, IK10



### LED

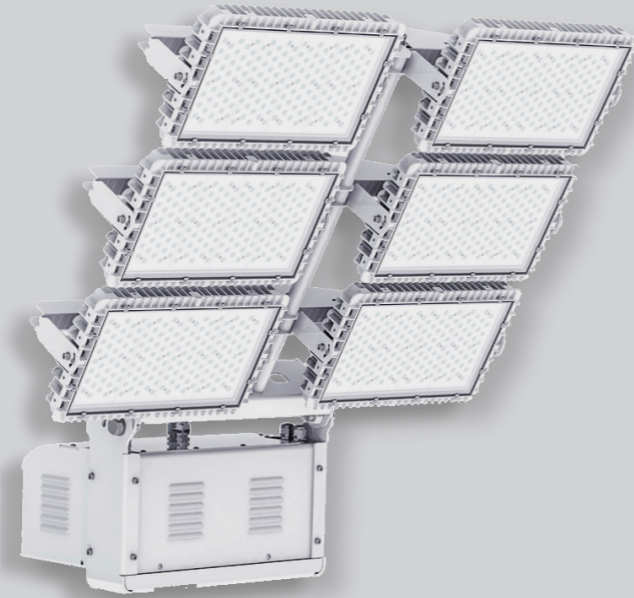
1800K, 2000K, 2700K, 3000K, 4000K,  
5000K, 6000K  
CRI>70 (5000K, 6000K), CRI>80  
initial MacAdam 4 SDCM  
80.000h L80

### LIGHT DISTRIBUTION

symmetric 12° / 15° / 30° / 60° / 80°

### ELECTRIC

ON-OFF switchable, 1-10V  
DMX  
KNX  
DALI dim  
Zigbee - SX Link



HEAVY DUTY

### Description

High-performance floodlights made of die-cast aluminium to the highest industry standards. Developed for use in maritime environments, heavy industry and sports applications. Extremely robust and resistant housing for the toughest environmental conditions and input voltage ranges up to 400VAC and 700VDC. Individually swivelling light units allow the light distribution to be extended. Highly efficient and durable light emitting diodes with uniform light distribution and high luminous flux packages. Integrated, replaceable ballast with temperature monitoring. Swivelling mounting bracket suitable for suspended and upright mounting.



### Types

PRODUCT CODE	POWER	LUMINOUS FLUX	LIGHT DISTRIBUTION	COLOUR TEMP.	WEIGHT luminaire	WEIGHT control unit box
FLSU0880.XXX24	880W	149.600lm	SPOT 12° SPOT 15° SPOT 30° MEDIUM 60° MEDIUM 80°	1800K 2000K 2700K 3000K 4000K 5000K 6000K	38kg	10kg
FLSU1000.XXX24	1000W	170.000lm				
FLSU1120.XXX24	1120W	190.400lm				
FLSU1400.XXX24	1400W	238.000lm				
FLSU1320.XXX24	1320W	224.400lm			50kg	18kg
FLSU1500.XXX24	1500W	255.000lm				
FLSU1680.XXX24	1680W	285.600lm				
FLSU2100.XXX24	2100W	357.000lm				

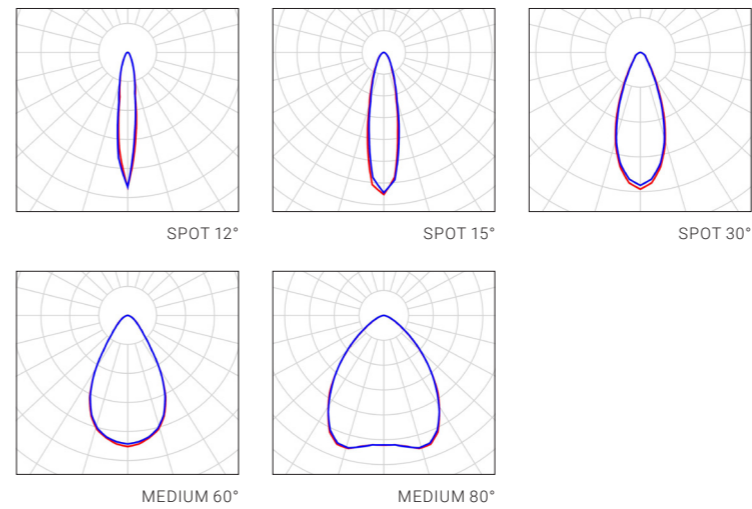
.X X X --  
1 2 3

**1 Control**  
2... DALI dim  
3... 1-10V dim  
4... KNX dim  
5... DMX dim  
Z... Zigbee SX-Link

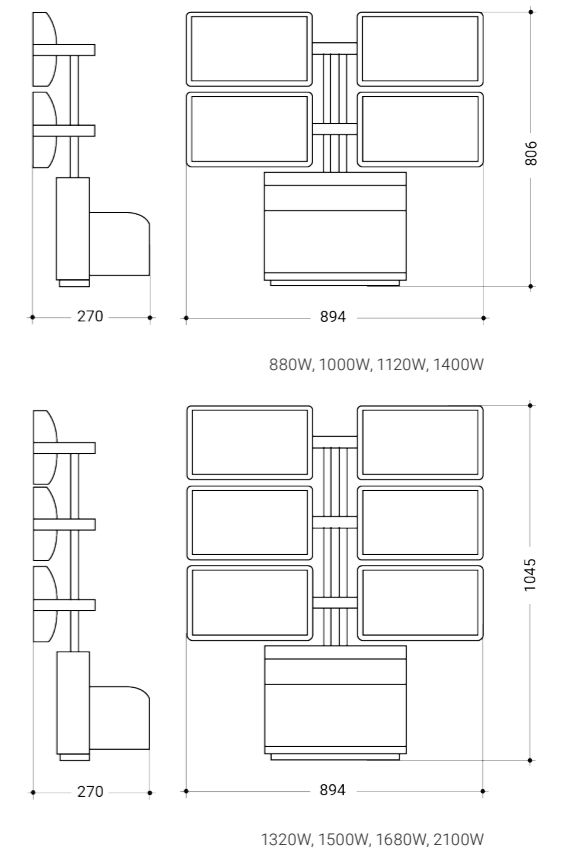
**2 Light distribution**  
0... SPOT 12°  
1... SPOT 15°  
2... SPOT 30°  
3... MEDIUM 60°  
4... MEDIUM 80°

**3 Colour Temp.**  
1... 1800K  
2... 2000K/2700K on request  
3... 3000K  
4... 4000K  
5... 5000K  
6... 6000K

### Light distribution



### Dimensions

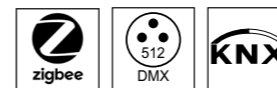


### Input voltage

528V AC  
747V DC

The SUPREA series is manufactured with an input voltage range of 90V to 305V AC and optionally 127V to 431V DC. The version for 400V input voltage covers 180V to 528V AC and optionally 254V to 747V DC.

### Numerous control options



### Customisable light distribution

The light module's light distribution can optionally be composed of different optics to fulfil individual illumination requirements.

### Mounting bracket

Customised mounting bracket.

### Coating

The luminaire housing can optionally be coated according to specifications, e.g. for use in environments with chemical gases or high salt content.



SUPREA 880W, 1000W, 1120W, 1400W