

09 Wall and ceiling luminaires

TILIA round square

Quickinfo

LUMINAIRE

ceiling, wall
surface mounted
polycarbonat, white
IP54, IK08



LED

3000K, 4000K, 5000K
CRI>80
initial MacAdam 4 SDCM
30.000h L80

OPTIC

opal wide

ELECTRIC

ON-OFF switchable
integrated motion sensor



Description

Round or square luminaire body made of impact-resistant white polycarbonate. Modern timeless design available in 3 sizes with wide and homogeneous illumination. TILIA is suitable for wall and ceiling mounting and can be used in areas with increased protection requirements due to its IP54 protection rating. In addition to efficiency, lifespan and versatility, the luminaire also impresses with its easy installation. Optionally, TILIA can be equipped with an integrated motion sensor.



Types

TILIA round

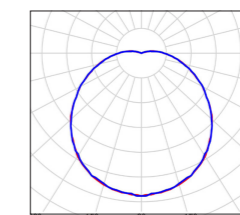
PRODUCT CODE	POWER	LUMINOUS FLUX	COLOUR TEMP.	DIMENSION	WEIGHT
ALTR018.1AC22.54	18W	1.900lm	3000K 4000K 5000K adjustable	Ø280x53mm	0,7kg
ALTR024.1AC22.54	24W	2.600lm		Ø330x53mm	0,8kg
ALTR036.1AC22.54	36W	4.000lm		Ø400x53mm	1,0kg

TILIA square

ALTS018.1AC22.54	18W	1.900lm	3000K 4000K 5000K adjustable	280x280x53mm	0,7kg
ALTS024.1AC22.54	24W	2.600lm		330x330x53mm	0,8kg
ALTS036.1AC22.54	36W	4.000lm		400x400x53mm	1,0kg



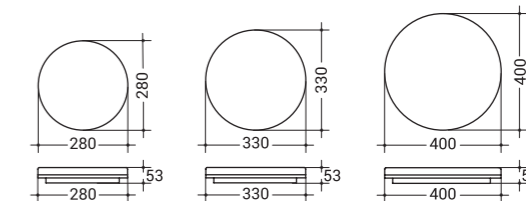
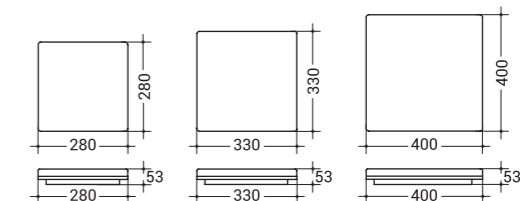
Optic



OPAL



Dimension



Multicolour



One luminaire, different colour temperatures

Different colour temperatures can be set using dip switches.

Optic



Smooth opal structure for soft illumination

Motion sensor



Upon request, configurable with integrated motion sensor

