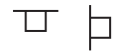


# 02 Floodlights MID2F

## Quickinfo

### LUMINAIRE

ceiling, wall, mast  
surface mounted  
aluminium, grey RAL9006  
IP66, IK09



### LED

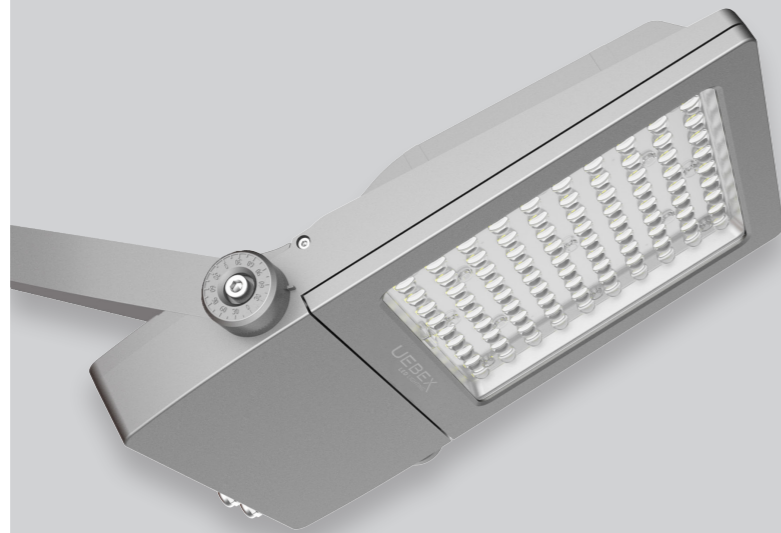
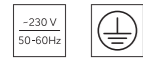
3000K, 4000K  
CRI>70  
initial MacAdam 4 SDCM  
50.000h L80

### LIGHT DISTRIBUTION



### ELECTRIC

ON-OFF switchable  
DALI dim



## Description

The MID2F floodlight stands out with its sleek, modern design and is the ideal solution for professional lighting of sports fields and outdoor areas of all kinds. The housing, made of grey powder-coated die-cast aluminum, guarantees excellent weather resistance and durability. Thanks to highly efficient LEDs and an innovative lens system with asymmetrical light distribution, the floodlight delivers precise and energy-efficient illumination. The hardened glass cover provides additional robustness and protection. The adjustable mounting bracket allows flexible wall and pole installation, making the floodlight the perfect solution for all lighting requirements.



## Types

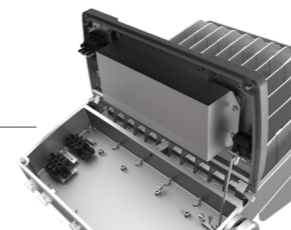
PRODUCT CODE	POWER	LUMINOUS FLUX	COLOUR TEMP.	WEIGHT
FLM2050.X1X14.S	50W	6.900lm	3000K 4000K	4,5kg
FLM2100.X1X14.S	100W	13.700lm		
FLM2150.X1X14.S	150W	20.500lm		
FLM2200.X1X14.M	200W	27.300lm		
FLM2250.X1X14.L	250W	34.100lm		
FLM2300.X1X14.L	300W	40.000lm	8,5kg	

.X | X -- 1 Control  
1... ON-OFF switchable  
2... DALI dim  
3 Colour temp.  
3... 3000K  
4... 4000K

Enhanced heat sink fins for thermal self-regulation

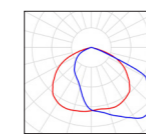


Two cable entries with stainless steel gland fittings Loop-In / Loop-Out



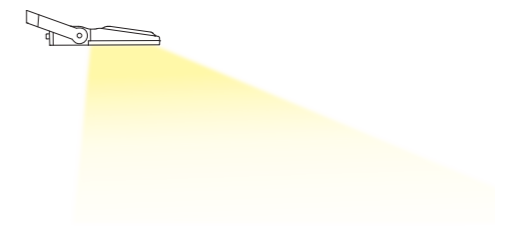
Easy access to luminaire for electronic connection on the rear side

## Light distribution



ASYM. 80°x125°

## Asymmetric light distribution



## Dimensions

