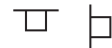


# 02 Floodlights MID2F

## Quickinfo

### LUMINAIRE

ceiling, wall, mast  
surface mounted  
aluminium, grey RAL9006  
IP66, IK09



### LED

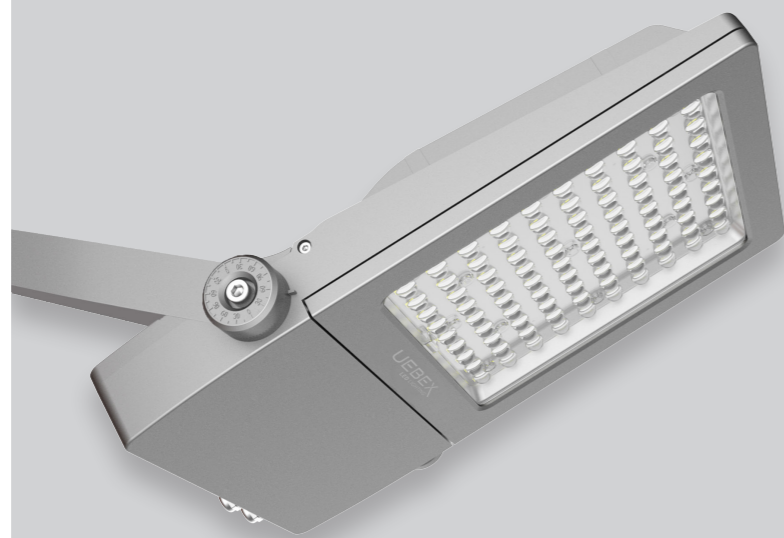
3000K, 4000K  
CRI>70  
initial MacAdam 4 SDCM  
50.000h L80

### OPTIC

asymmetric wide

### ELEKTRIC

ON-OFF switchable  
DALI dim



## Description

Floodlight with a straight, modern design. Versatile solution for professional illumination of squares and outdoor areas of any kind. Housing made of grey powder-coated die-cast aluminium. Highly efficient light-emitting diodes with innovative lens system and asymmetric light intensity distribution. Cover made of tempered glass. Extremely weather-resistant and durable. With swivelling mounting bracket suitable for wall and pole mounting.



## Types

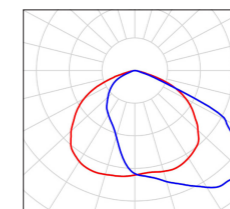
PRODUCT CODE	POWER	LUMINOUS FLUX	COLOUR TEMP.	WEIGHT
FLM2050.X1X14.S	50W	6.900lm	3000K 4000K	4,5kg
FLM2100.X1X14.S	100W	13.700lm		
FLM2150.X1X14.S	150W	20.500lm		
FLM2200.X1X14.M	200W	27.300lm		7,0kg
FLM2250.X1X14.L	250W	34.100lm		
FLM2300.X1X14.L	300W	40.000lm	8,5kg	



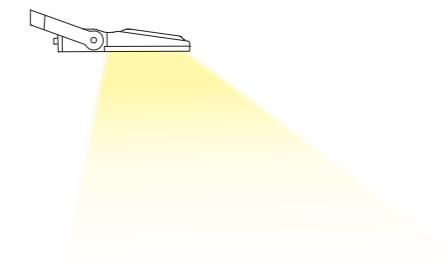
1 Control  
1... ON-OFF switchable  
2... DALI dim

3 Colour Temp.  
3... 3000K  
4... 4000K

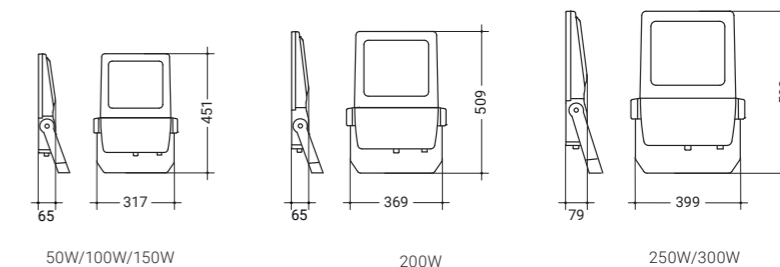
## Optic



ASYM. 80°x125°



## Dimension



50W/100W/150W

200W

250W/300W

