

04 Luminaires with higher degree of protection

BARAT Ex

Quickinfo

LUMINAIRE

ceiling, wall
suspended, surface mounted
polycarbonat, grey RAL7035
IP66, IK08



LED

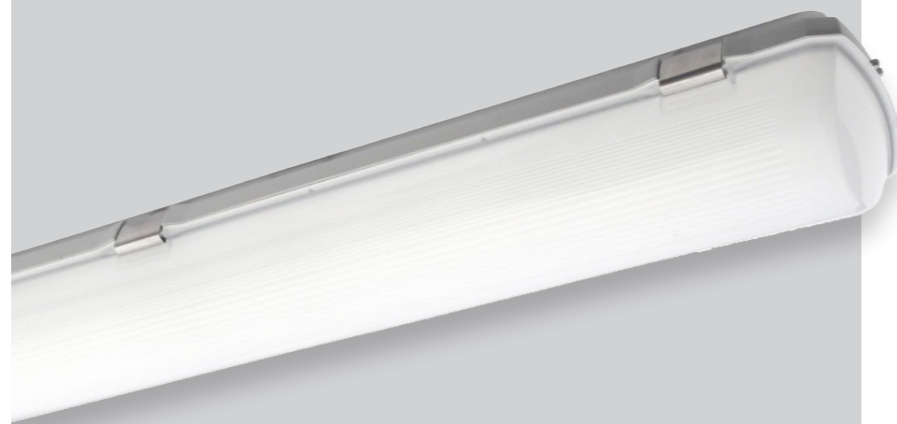
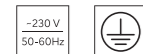
3000K, 4000K, 5000K
CRI>80
initial MacAdam 3 SDCM
75.000h L80

OPTIC

opal wide

ELECTRIC

ON-OFF switchable
emergency 3h



Description

Explosion-proof LED damp-proof luminaire. Robust and resistant housing made of polycarbonate for the toughest environmental conditions. Stainless steel brackets. Approved for explosion zones 2, 22. Suitable for surface, wall and pendant mounting. Highly efficient and long-life LEDs. Optimised opal polycarbonate diffuser for uniform light distribution.

Explosion protection marking:

II 3G Ex nA IIC T6 Gc; II 3D Ex tc IIIC T85°C Dc

Explosion group: gas: IIC, IIB, IIA / dust: IIIC, IIIB, IIIA



Types

PRODUCT CODE	POWER	LUMINOUS FLUX	LENGTH	COLOUR TEMP.	WEIGHT
FRBA043.XAX24.Ex	43W	5.500lm	1272mm	3000K	2,8kg*
FRBA054.XAX24.Ex	54W	6.900lm	1572mm	4000K	3,3kg*
FRBA081.XAX24.Ex	81W	9.400lm		5000K	3,3kg*



1 Control
1... ON-OFF switchable
8... emergency 3h

3 Colour Temp.
3... 3000K
4... 4000K
5... 5000K

*excl. emergency lighting function

Zones

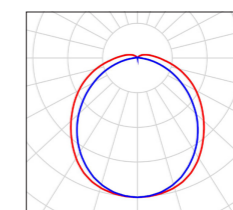
Suitable for potentially explosive atmospheres of **zone 2 and zone 22** in gas and dust atmospheres.

Explosion protection marking



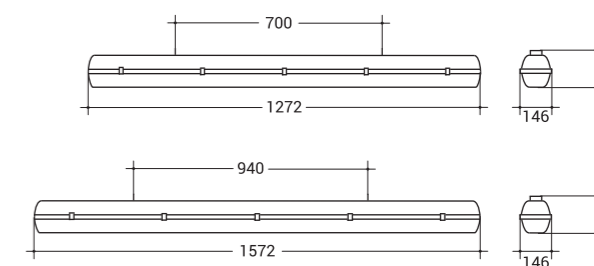
II 3G Ex nA IIC T6 Gc
II 3D Ex tc IIIC T85°C Dc

Optic



OPAL 120°

Dimension



Accessories

	PRODUCT CODE	DESCRIPTION
	FRBAZB.325	Through-wiring 3x2.5mm ² with two push-in terminals
	FRBAZB.525	Through-wiring 5x2.5mm ² with two push-in terminals