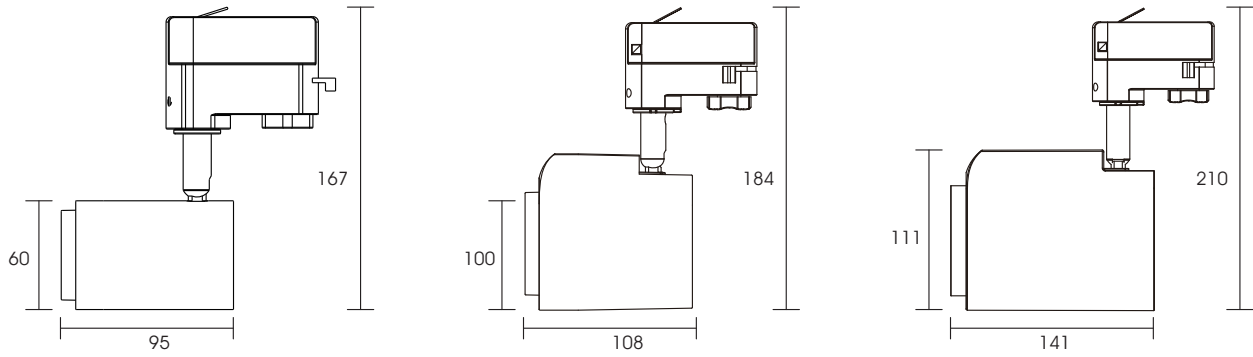
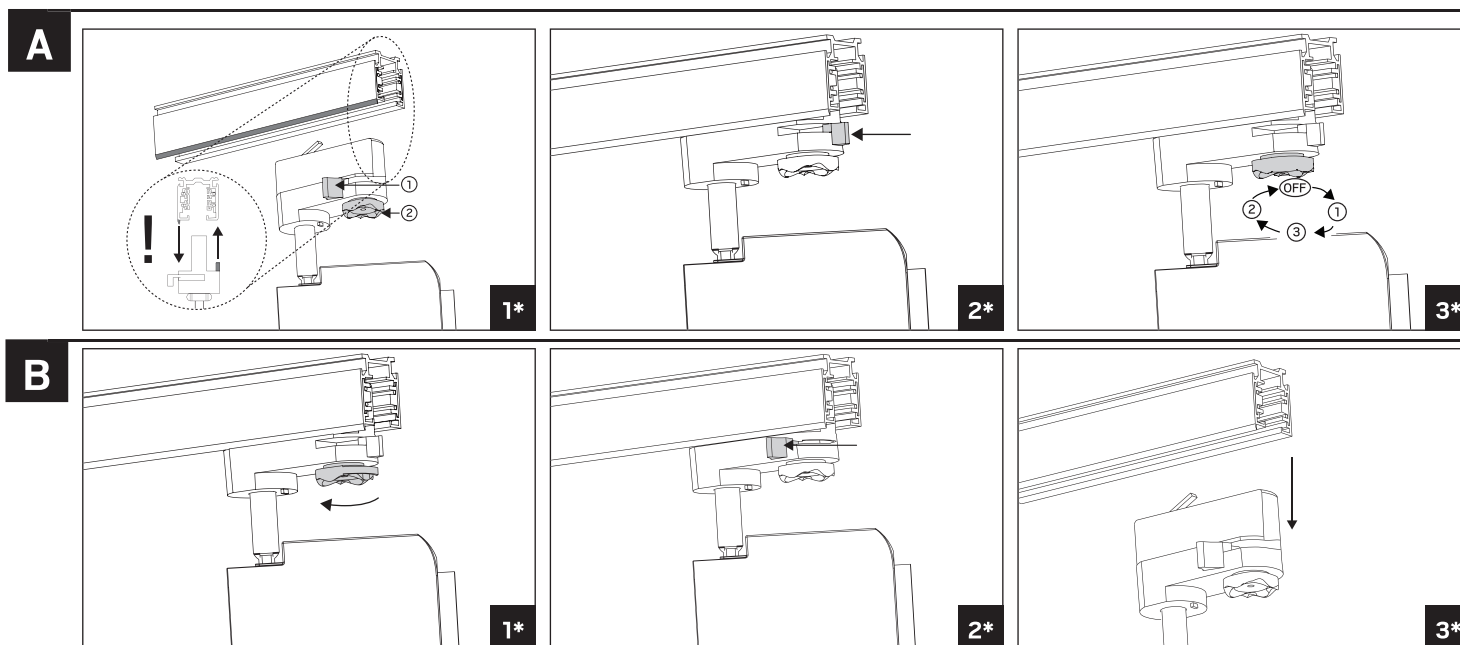
	Name	Input Characteristics
	Schienenstrahler WAVE 10W SLWS010 22W SLWM022 38W SLWL038 40W SLWL040	230V 50/60Hz Power Factor >0.95





A Installation

A1 1) Shaft position as drawing shown.

2) Power switch adjust to "OFF" position.

IMPORTANT! – Ensure that the luminaire is mounted the right way round before setting the locking catch.

A2 Shaft position as drawing shown.

A3 Adjust Selection to (OFF/1/2/3)

B Removal

B1 Power switch adjust to "OFF" position.

B2 Shaft adjust to drawing shown.

B3 Disassembly of adaptor