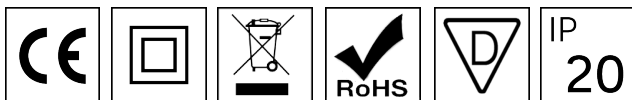


INSTALLATION INSTRUCTION

IMPORTANT: Read all instructions before installing fixtures. Retain for future reference.
SAFETY: For your safety, this fixture must be wired in accordance to local electrical regulation. All work should be done by a qualified electrician.



WARNING:

Make certain power is OFF from the electrical panel before starting installation or attempting any maintenance. Indoor installation only.

TOOLS REQUIRED:

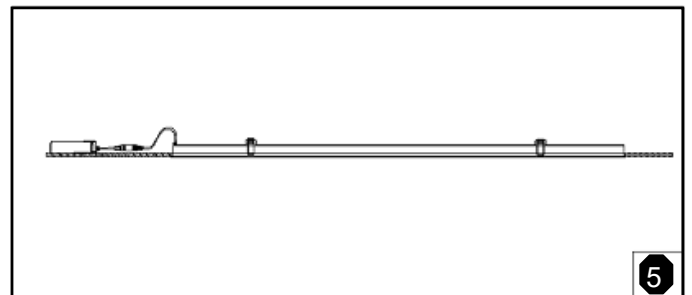
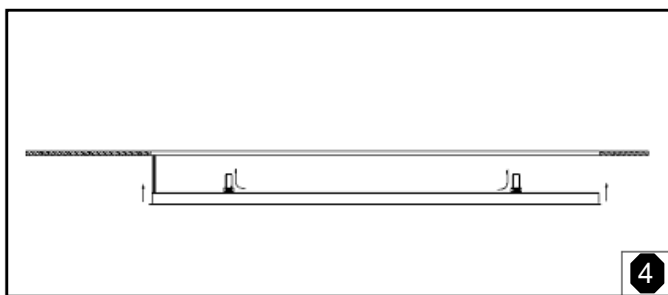
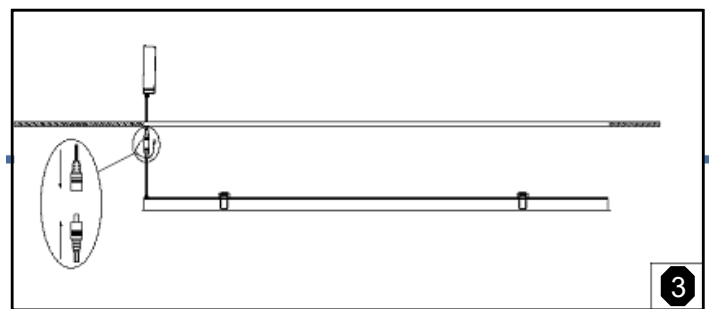
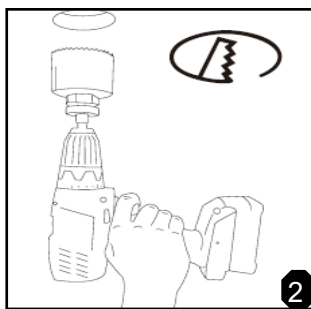
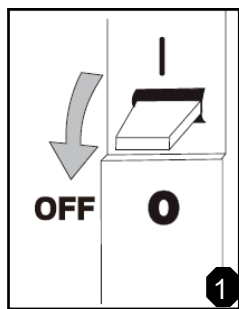
- Saw
- Measuring Tape
- Electrical Wiring (use type and gauge suitable for application to connect the fixtures)

ASSEMBLY INSTRUCTIONS:

INPUT: 220-240V AC 50/60Hz, IP20

CUTOUT:

Model	DLLP016	DLLP024	DLLP036
Cut-out(mm)	170x47	333x47	498x47



1. Turn power OFF from the electrical panel before starting installation. (Fig. 1)
2. Locate a suitable position to place the fixture and open a hole in accordance to the cut-out dimensions. (Fig. 2)
3. Run the electrical wire from the switch (power supply) through the mounting hole.
4. Open the LED driver; connect the Live and

Neutral wires to L and N terminals on the driver separately, close the cover. (Fig. 3)

5. Push spring loaded clips on the fixture upwards and insert fixture base into the mounting hole. Release the clips and fixture will be pulled flush to the ceiling. (Fig. 4)
6. Once assembly is complete, turn on power to confirm fixture is working properly.

Waste of Electrical and Electronic equipment: Do not dispose of this luminaire with your normal household waste. Recycle where facilities exist.